



HOW DOES THE MONEY YOU RAISE MAKE A DIFFERENCE?

Here's how your fundraising could help:



£3,170

inpatient unit
specialist
mattress

£1,250

fund 13 'hospice
at home' visits

£700

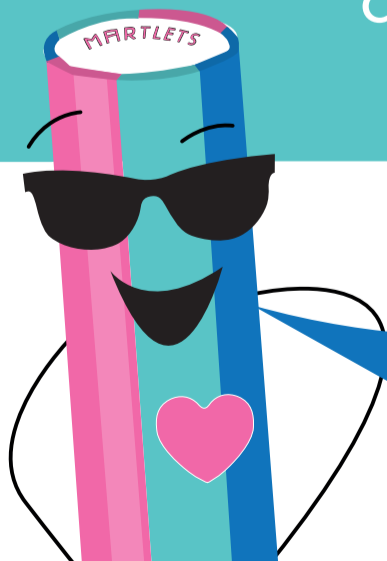
inpatient unit
bed for a day

£250

three
bereavement
counselling
sessions

£25

important
medical
supplies



"We're only able to provide free life-changing hospice care thanks to our supporters".